

SPRING HOME DESIGN

# PACIFIC NW

*The Seattle Times*

MAY 10, 2015



## A Fresh Perspective

**ORCAS ISLAND:** Cool breezes

**MARBLEMOUNT:** A creative cabin

**MAZAMA:** The great getaway

**VASHON:** A real jewel

**TASTE:** Vietnamese spring rolls ■ **FIT FOR LIFE:** Hula Babies ■ **NATURAL GARDENER:** New books





**Cabinets are cherry** with a textural band featuring a custom pattern. The backsplash is also custom, from Ann Sacks. The stools have a milled-wood tractor seat. The floor is concrete.

FINALLY (AND





SPRING HOME DESIGN

■ by Rebecca Teagarden | photos by Benjamin Benschneider



Architect Nils Finne either designed or had a hand in selecting everything in the home. Here he designed the cascading cast-glass and quartz counter, pendant light fixtures that recall rivers, and the dining table, two black walnut planks floating above arched aluminum legs.

**B**EHOLD, THE RESULT of plain old Norwegian stubbornness.

It is a thing of beauty, is it not? This raised and sweeping house tucked into a copse of trees and placed before a golden meadow in the mountain getaway mecca of Mazama.

It is the house that almost wasn't.

"This house has been in the office for years — eight or nine," says architect Nils Finne of the recession-battered project, drawn and redrawn. "I just kept saying, 'I'm gonna finish this. I'm gonna ►

It took awhile, but Montana natives get their dream house in the great outdoors

FINELY) FINISHED





**The home**, Finne's translation of "crafted modernism," sits nestled among the trees at the head of an expansive meadow. A two-story bedroom wing anchors the living pavilion, which appears to hover over the meadow.

## FINALLY (AND FINELY) FINISHED

finish this.' "

And here it is, so freshly finished that all involved are still taking a swing at the final punch list.

Jeff and Nadine have been heading over to Mazama since they married in 1989. (They're both from Montana. It reminds them of home.) Immediately they knew that they, too, wanted a piece of this winter-wonderland action. The couple bought land in 1992 and began plotting the future, finding their architect in a magazine ad for Quantum Windows & Doors (used here, too).

"We gave Nils an idea, and then we got out of the way," says Jeff. (A beautiful great room, prominent fireplace, a home with beams.)

But as the stubborn Norwegian (his words, not mine) was drawing up plans, the stock market was falling. "The builder (Rick Mills of North Cascades Construction) was already committed, so I asked Nils, 'What if we build a garage with a living unit on it first?'" says Jeff. "He said, 'Yep.' "

For six years, that was home.

Meanwhile, Finne readjusted plans to budget. Finally, in 2012 it was go time.

"This is not at all what I had in mind," says Nadine, seated at the dining table. (It's a compliment.) "But we knew he had our interests at heart. We had our own

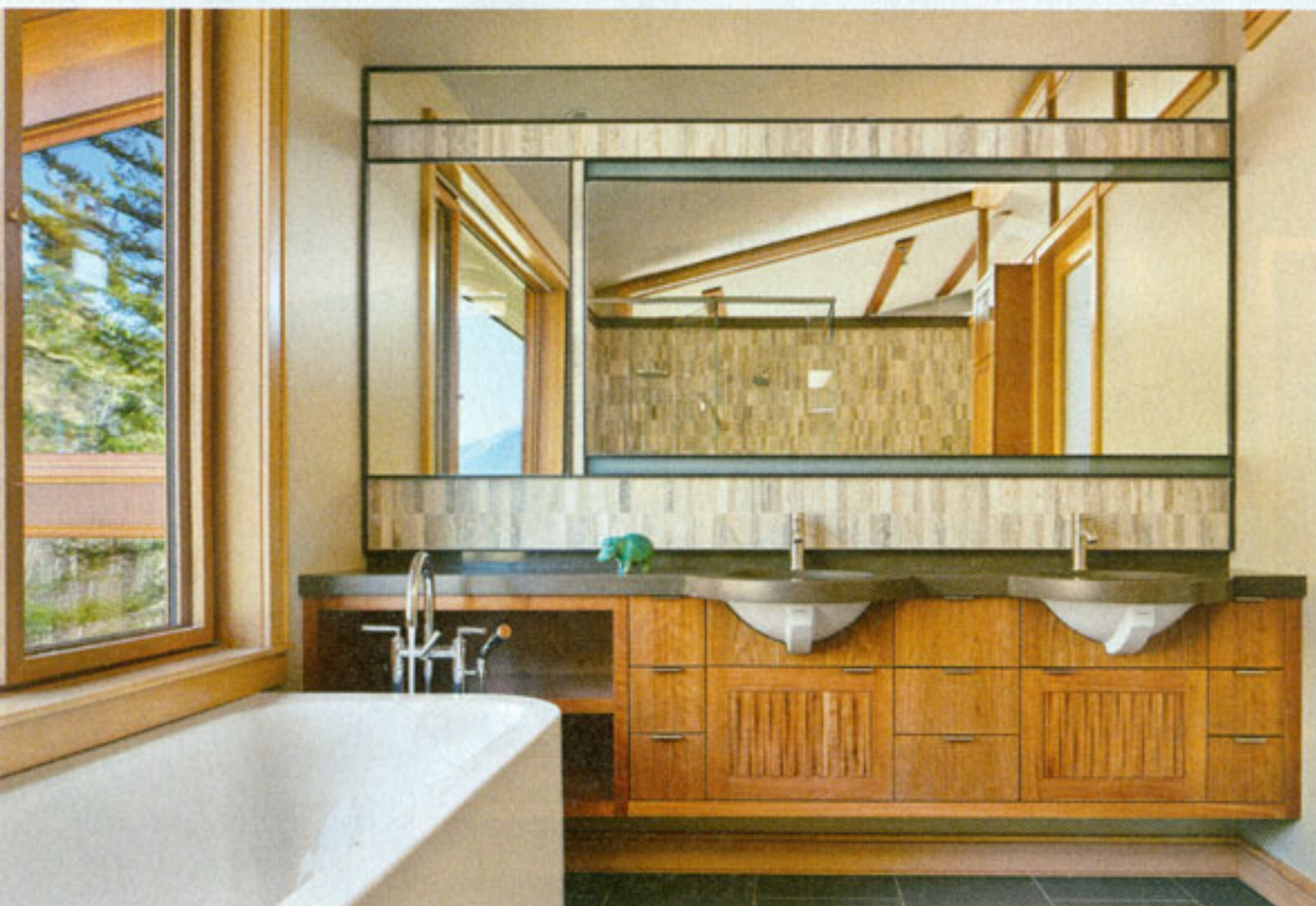


"He's even got the bed at a level you feel like you're sleeping outdoors," says homeowner Jeff of the siting of the master bedroom. Outside is a view that reminds the couple of Montana.





The home's standing-seam metal roof over the main living pavilion warps upward to express lightness, and it also helps shed snow.



"This room has a huge window so it allows you to lie in the tub and be surrounded by the outdoors," says Finne. Cabinetry is cherry with accent panels, the counter is quartz. The mirror has a limestone mosaic band from Ann Sacks outlined in a custom-steel frame. It is lit by LED lights.

requirements, but he put them into his vision, and we really got this fabulous-looking thing."

Indeed. They got the full Finne treatment, his translation of "crafted modernism" from structure to interiors to furnishings. The two-story bedroom wing grounds the home, anchoring a raised "living pavilion" supported by exposed steel columns. The meadow meets the home and passes beneath. The raised level enhances views and also keeps it well above the 3 to 4 feet of snow typical for the upper Methow Valley.

Finne called for a standing-seam metal roof that warps upward at each end, expressing lightness (and shedding snow). Interior wood beams "appear like an unfolding fan as the roof pitch changes. The main interior bearing columns are steel with a tapered V-shape, recalling the lightness of a dancer."

There are cast bronze insets at the front door and, inside, variegated laser-cut steel railing panels, a curvilinear cast-glass kitchen counter and waterjet-cut aluminum light fixtures

(resembling a river). Finne also either designed or chose all furnishings; the living-room ottoman (brown leather) recalls flagstones. For the great-room rug, dark-brown veining throughout a field of gray greens, "he went out and grabbed some of the seed heads from the meadow and took those with him," reports Nadine.

Finne (project architect Chris Hawley) offered up everything the couple wanted and more in 4,000 square feet, three bedrooms, 4.5 baths, the home built by Rimmer & Roeter Construction in Cashmere. "He's even got the bed at a level you feel like you're sleeping outdoors," Jeff says.

The couple has already gotten what they bargained for: Jeff awoke recently to discover a large black bear working its way up the nearby apple tree.

"The guy has endless energy and he's so passionate," Nadine says of their architect. "You have to say yes to him. I would have given up a long time ago, but he never gives up." □

*Rebecca Teagarden writes about architecture and design for Pacific NW magazine. Benjamin Benschneider is a magazine staff photographer.*

Our free back pain seminar could, in fact, **free you** from back pain.



Don't let continued back pain hold you back. Attend a Swedish spine seminar and you'll hear about the latest surgical and nonsurgical solutions to back problems. You'll also learn the advantages of being cared for by one of the largest spine programs in the state.

Conducted by our spine experts, our back pain seminar only costs two hours of your time, so reserve your spot now. It's a small price to pay for freedom from back pain.

## Free Seminar on Back Pain

Register online at [swedish.org/classes](http://swedish.org/classes) or call 206-386-2502.

- Thursday, May 14, 6–8 p.m.  
Swedish Edmonds  
21601 76th Ave. W., Edmonds
- Thursday, May 21, 6–8 p.m.  
Swedish Orthopedic Institute  
601 Broadway, Seattle  
(Corner of Broadway and Cherry Street – Hourly parking available under the building.)



**SWEDISH**

Extraordinary **care**. Extraordinary **caring**.<sup>SM</sup>

To view classes offered at all Swedish campuses, visit [swedish.org/classes](http://swedish.org/classes)